



Application

- Can be used to transfer clean water or other liquids similar to water in physical and chemical properties
- Suitable for small living water supply, automatic water sprinkler system, small air conditioner system or supporting equipment etc.

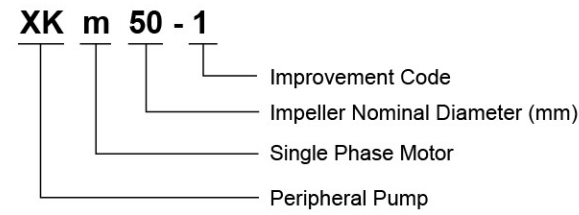
Pump

- Special anti-rust treatment for cast iron pump body and support
- Brass impeller
- AISI 304 shaft
- Max. liquid temperature: +40°C
- Max. suction: +8 m

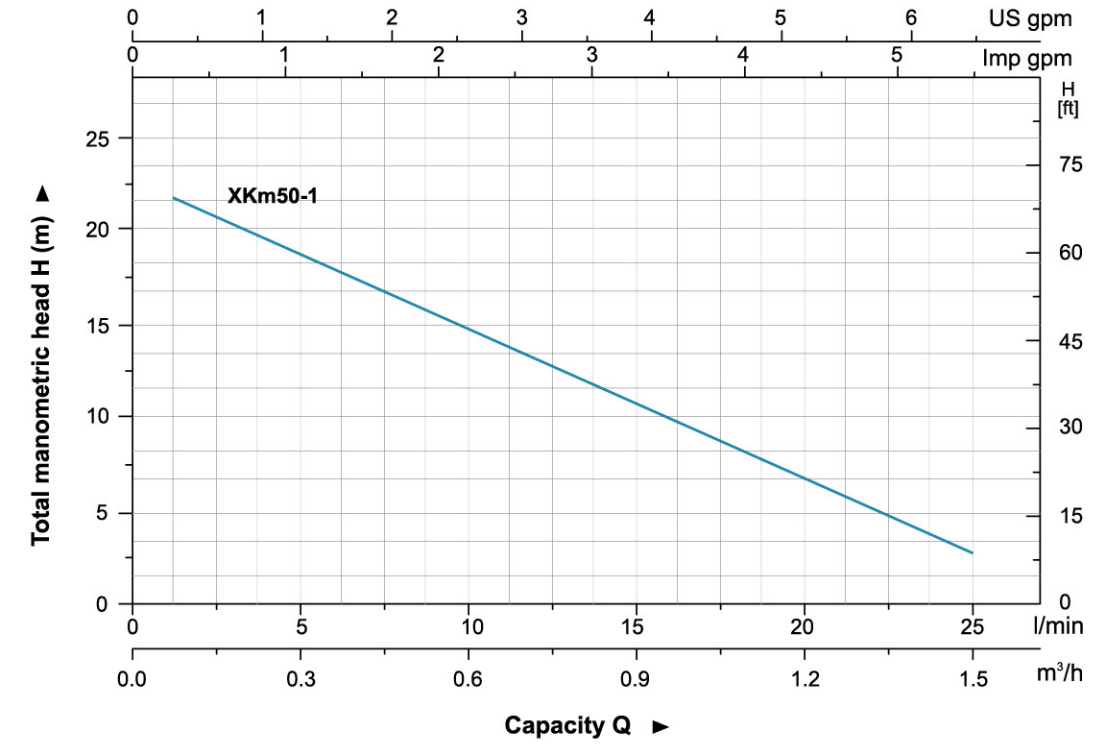
Motor

- C&U bearing
- Motor with copper winding
- Built-in thermal protector for single phase motor
- Insulation class: F
- Protection class: IPX4
- Max. ambient temperature: +40°C

Identification Codes



Hydraulic Performance Curves

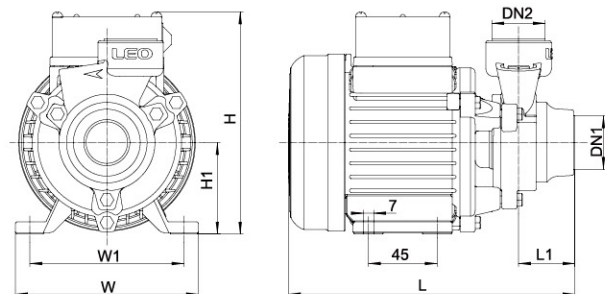
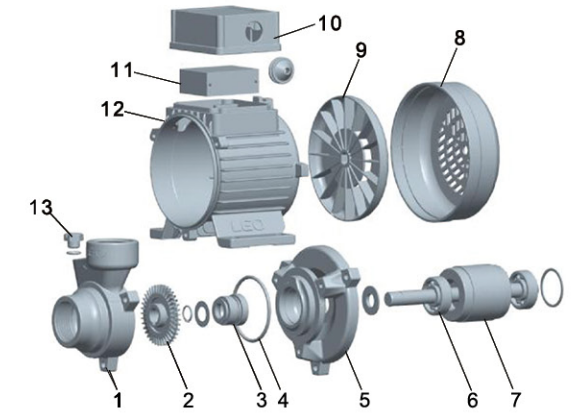


Technical Data

MODEL	POWER		Q (m³/h)	0	0.3	0.6	0.9	1.2	1.5
	kW	HP							
XKm50-1	0.11	0.15	H(m)	23	19	15	11	7	3

Materials Table

No.	Part	Material
1	Pump body	HT 200
2	Impeller	Brass
3	Mechanical seal	Carbon/Ceramic
4	O-ring	NBR
5	Support	HT 200
6	Bearing	
7	Rotor	
8	Fan cover	PP
9	Fan	PP
10	Terminal box	PC/ABS
11	Capacitor	
12	Stator	
13	Filling plug	HPb59-1



Dimension

MODEL	DN1	DN2	L (mm)	L1 (mm)	H (mm)	H1 (mm)	W (mm)	W1 (mm)
XKm50-1	1"	1"	186.5	36	146	60	120	100

Package Information

Model	GW (Kgs)	L (mm)	W (mm)	H (mm)	Quantity (PCS/20' TEU)
XKm50-1	3.6	200	140	160	4680

